



LOCATION:  
565 164th Ave SE, Hillsboro, ND.  
From I-29 Exit 100, West side of  
interstate, 1-1/4 miles South.

# Farm Retirement AUCTION

**MONDAY, NOVEMBER 12 | 10AM** 2018

**AUCTIONEER'S NOTE:** Most equipment has been purchased new, has had excellent maintenance and has been stored inside. Please note these are preharvest hours and miles. Major equipment begins selling at 10:30 AM. Live online bidding available on major equipment. Registration, terms & details at SteffesGroup.com.



## TRACK TRACTORS

**2014 Case-IH 550 Quadtrac**, luxury cab w/susp., heated red leather w/buddy seat, powershift, 4 hyd., high cap. hyd. pump, return flow, 1000 PTO, Pro 700 display, 372 receiver w/Omnistar/RTX unlock, integrated auto steer, front/rear diff lock, full HID lights, radar, clear cap idlers, front tow cable, cold weather starting pkg., electric mirrors, 30" tracks, scraper hitch, never used on scraper, 1,784 hrs., S/NZDF139071

**2014 Case-IH 470 Rowtrac Quadtrac**, luxury cab w/susp., heated red leather w/buddy seat, powershift, 6 hyd., twin flow hyd. pumps, return flow, power beyond, 1000 PTO, Pro 700 display, 372 receiver w/RTK antenna, Omnistar & RTK unlocks, integrated auto steer, high cap. drawbar, front/rear diff lock, full HID lights, radar, clear cap idlers, front tow cable, electric mirrors, cold weather starting pkg., radar, drive wheel scrapers, 18" tracks, 1,334 hrs., S/NZEF301638

## TRACTORS

**2014 Case-IH Magnum 235 MFWD**, class 4.75 front axle w/susp., luxury cab w/susp., heated red leather w/buddy seat, 23 spd. powershift, 5 hyd., high flow. hyd. pumps, return flow, 3 pt., quick hitch, 540/1000 PTO, diff lock, Pro 700 display, 372 receiver, integrated auto steer, full HID lighting, radar, front fenders, rear wheel weights, Cat III drawbar, front weight bracket, 380/80R38 front singles, 380/90R54 rear duals, 1,093 hrs., S/NZDRD07938

**1981 John Deere 4440 quad range**, 3 hyd., 3 pt., quick hitch, 540/1000 PTO, (12) front suitcase weights, 10,00-16SL front tires, 14.9R46 rear duals, shows 3,809 hrs., approx. 10,000 total hrs., engine OH 3,800 hrs. ago, S/N4440H042541R

## COMBINE

**2013 Case-IH 8230 axial flow, PRWD**, Power Plus CVT, AFX rotor, luxury cab, heated red leather w/buddy seat, refrigerator, deluxe controls, HD lateral tilt feeder house, rock trap, Pro 700 display, 372 receiver w/Omnistar/RTX unlock, integrated auto steer, Y&M w/mapping, high cap. unloading auger for 40' heads, independent cross auger controls, 2 spd. elevator, Cray Big Top hopper ext., MagnaCut fine cut chopper, ISO cameras, HID lights, diff lock, heavy duty final drives, on board air compressor, 2 sets concaves, rear hitch, 36" tracks, 28L26 rear tires, 867 sep. hrs., 1,280 engine hrs. S/NYDG220926

## HEADS & HEADER TRAILERS

**2012 Case-IH 2162 flex draper head**, 40', dual drive, AHH, finger reel, 3" cut, poly, Case-IH AFX hookups, gauge wheels, has all current Case-IH updates, S/NYCZN16608

**2012 Case-IH 2162 flex draper head**, 40', dual drive, AHH, finger reel, 3" cut, poly, Case-IH AFX hookups, gauge wheels, has all current Case-IH updates, S/NYCZN16342

**2011 Geringhoff RD1800/B Rotadisc chopping corn head**, 18x22", Headsight, (4) sensor AHH & lateral tilt, (4) stalk stoppers, Case-IH single pt. hookups, serviced by M&W Cornheads every year, S/N9232111822/B

**2013 Stud King MD42 tandem axle header trailer**, 42', torsion susp., electric brakes on 1 axle, front fenders, lights, S/N6818

**2013 Stud King MD42 tandem axle header trailer**, 42', torsion susp., electric brakes on 1 axle, front fenders, lights, S/N6788

**2014 Stud King MD38 tandem axle header trailer**, 38', torsion susp., electric brakes on 1 axle, front fenders, lights, S/N8057

## GRAIN CART & GRAVITY WAGONS

**2013 Brent 1596 Avalanche tandem axle grain cart**, 1,500 bu., 22" front auger, hyd. spout adj. w/5-function joystick control, 1000 PTO, Digi-Star 520 electric scale w/autolog, roll tarp, ISO camera, steerable axles, 900/60R32 tires, S/NB32090113

**Unverferth 335 gravity wagon**, 400 bu., double door, rear brakes, roll tarp, lights, SeedVac bulk seed delivery system, Honda GX340 electric start motor, S/ND2062020157

**Minnesota gravity wagon**, approx. 200 bu., Camco 8-ton running gear

## SPRAYER & TERRAGATOR

**2013 Case-IH 3330 self-propelled sprayer**, 100', luxury cab, red leather w/buddy seat, Aim Command, 1,000 gal. SS tank, rinse tank, Pro 700 display, 372 receiver w/RTK antenna, Omnistar & RTK unlocks, integrated auto steer, Autoboom height control, Accuboom 6-section control, remote section control, hyd. tread adj., active suspension, RH&LH fence row nozzles, SS chemical eductor, 3" fill, deluxe HID lights, power mirrors, fenders, boom touch down wheels, 380/90R46 tires, 584 hrs., S/NYDT035005

**(4) Michelin 650/65R38 flotation tires on rims at 95%**, for Case-IH 3330 sprayer, "Stored inside"  
**2003 TerraGator 8104 floater**, 70' booms, Deere diesel, TerraShift, single bin box, electric roll tarp, Raven SCS661 controller, Outback guidance, foam markers, (2) cameras, New 48x31.00-20 front tires, 66x43.00-25 rear tires, 7,116 hrs., recent major engine work, S/N84057303

## PLANTER & DRILL

**2006 John Deere DB66 CCS planter**, 36x22", Refuge Plus, DigiStar scale, hyd. drive vari-rate, RowCommand, pneumatic down pressure, 420 gal. poly tank, variable rate liquid in-furrow w/hyd. pump, John Deere rate controller, Redball flow monitor, rear hitch & fill, hyd. fold markers, pin adj. row cleaners, on-board hyd. air compressor, LED lights, 445/50R22.5 transport tires, rear cameras, com & soybean plates, "Complete rebuild & update in 2015", New wiring harness, brain boxes, bushings, closing arms, New meters & hyd. drives in 2017, runs on John Deere 2630 display "sold separately", S/NA0DB66X715106

**2004 John Deere 1820 air hoe drill**, 60', 5 section fold, 7-1/2" spacing, single shoot, full run blockage, rubber press wheels, full floating hitch, carbide tips, tandems across w/dual caster on wings, 2003 John Deere 1910 tow between commodity cart, 270 bu., twin compartment, hyd. fill auger, in-cab adj. seed & fertilizer rate, yellow & black rollers, 28L26 tires, cart S/NA01910T700243, drill S/NA01820X705177

## TILLAGE EQUIPMENT

**2012 John Deere 2410 chisel plow**, 42', 2-1/2" spikes, full floating hitch, single pt. depth, tandems across, 3-bar harrow, S/N1N02410XVC0745487

**2012 Summers disc chisel**, 36', 4" twists, front caster carrier wheels, walking tandems across, rear hitch, 4-bar harrow, S/NL2646

**2012 Case-IH 870 EcoTiger ripper**, 22', 11 shank, 24" space, rock flex 23" blades, rear covering disks, walking tandems, 7" carbide points, shin guards, 5-bar spike tooth harrow, 16.5-16.1 flotation tires, S/NYCD062033

**2014 Summers Super Coulter Plus**, 50', 5-section fold, 19" (8) wave coulters, hyd. leveling, tandems across, weight & light

## TILLAGE EQUIPMENT

pkgs., rear hitch & hyd., 3-bar harrow, HD 340/65R18 transport tires, "2 seasons of use", S/NN0462

**2010 Summers Super Coulter plus**, 40', 3-section fold, 20" (13) wave blades, hyd. leveling, tandems across, rear hitch & hyd., 3-bar harrow, S/NJO575

**2014 Case-IH Tiger Mate 200 field cultivator**, 50', 6" space, 5-section, rear hitch & hyd., walking tandems across, wing gauge wheels, 7" knock on sweeps, 4-bar harrow, HD 12.5L-16.5SL tires on main frame, S/NYED072620

**2014 Summers pull-type coil packer**, 50', 5-section fold, tandem wheels, ext. hitch, lights, "2 seasons of use", S/NN0754

**2009 Mandako land roller**, 50', 5/8"x42" drums, floating hitch, light pkg., S/NU09-12-50-79

**2012 Brandt 8200 Commander heavy harrow**, 82', auto fold, down pressure, 5/8"x28" carbide tipped tines at 90%, 5-bar sections, 16.5-16.1 flotation tires, S/N101251

**2014 Summers harrow packer**, 70', tandems on main, 3/8" x 12" tines, 5-bar sections, S/NN1012

**Melroe mulchweeder**, 40', 2-rank S-tines, auto fold, 5-bar harrows

**Alloway row crop cultivator**, 18x22", 3pt., hyd. flat fold, HD single S-line, HD rear hitch, "Used for liquid fertilizer application"

## SEMI TRACTORS & SERVICE TRUCK

**2011 Mack CXU613 day cab**, tandem axle, Mack MP8, Allison automatic, air ride, cruise, engine brake, diff lock, power windows/locks/mirrors, single aluminum fuel tank, 196" WB, poly 1/2 fenders, 11R22.5 tires on aluminum rims, shows 487,945 miles

**2011 Mack CXU613 day cab**, tandem axle, Mack MP8, Allison automatic, air ride, cruise, engine brake, diff lock, power windows/locks/mirrors, single aluminum fuel tank, 196" WB, poly 1/2 fenders, 11R22.5 tires on aluminum rims, shows 514,432 miles

**2010 Mack CXU613 day cab**, tandem axle, Mack MP8, Allison automatic, air ride, cruise, engine brake, diff lock, electric mirrors, PWP/PL, single aluminum fuel tank, 196" WB, poly 1/2 fenders, 2-line wet kit, HD rear hitch, 11R22.5 tires on aluminum rims, shows 655,547 miles

**2000 Volvo WG64 tandem axle service truck**, Cummins ISM, Allison HT740D automatic, full locking rears, 3.58 ratio, 16,000 lb. front axle, 40,000 lb. rear axles, HD spring susp., 17" service body, storage compartments, stocked w/tools & supplies, torch set, hose reels for torch, air & 110v, 1,200 gal. fuel tank w/high cap. air pump & hose reel, (2) oil tanks, air pumps w/meters & hose reels, 100 gal. fuel tank w/Fill-Rite 15 gpm pump, National N85 knuckle boom crane, hyd. outriggers, rear hyd. winch, HD front bumper w/storage, HD rear hitch, 228" WB, 315/80R22.5 fronts, 11R22.5 rears on all steel rims, shows 1,300 miles, owner states approx. 100,000 total miles

## HOPPER BOTTOM TRAILERS

**2014 Wilson DWH-551 tri-axle hopper bottom**, ag hopper, 48"x102"x78", 3rd hopper, air susp., air scale, 5' axle spacing, air lift rear axle, roll tarp, sight glasses, 2-rows LED lights, SS rear & front corners, 11R24.5 tires on all aluminum rims, original virgin tires, approx. 10,000 total miles

**2012 Wilson DWH-551 hopper bottom**, 41"x96"x66", ag hopper, air susp., air load gauge, sight glasses, SS rear & front corners, 2-rows LED lights, roll tarp, 11R24.5 tires on all aluminum rims

## HOPPER BOTTOM TRAILERS

**2010 Wilson DWH-501 hopper bottom**, 41"x96"x66", ag hopper, air susp., air load gauge, sight glasses, SS rear & front corners, 2-rows LED lights, roll tarp, 11R24.5 tires on all aluminum rims

**2010 Wilson DWH-501 hopper bottom**, 41"x96"x66", ag hopper, air susp., air load gauge, sight glasses, SS rear & front corners, 2-rows LED lights, roll tarp, 11R24.5 tires on all aluminum rims

## TRAILERS

**2005 Trail King TK80ACS step deck**, aluminum/steel combo, 53'x102", tandem axle, sliding rear axle, air susp., sliding winches, (2) Enduraplas 3,200 gal. poly tanks, 3" plumbing, 3" cast iron pump w/Honda motor, F&S 3" hose reel, (2) 30 gal. mix cones, 255/70R22.5 tires on steel rims, "Tank, pump & hose reel setup are in 1 year old"

**1980 Fruehauf flatbed trailer**, 42'x96", tandem axle, spring susp., wood deck, (2) 3,200 gal. poly tanks, 3" plumbing, 3" cast iron pump w/Honda 8 hp. motor, F&S 3" hose reel, 295/75R22.5 tires

**1978 Great Dane tri-axle flatbed trailer**, 30'x96", spring susp., 1,550 gal. poly tank, 2" plumbing, 2" transfer pump & hose reel, w/2012 Unverferth 3750 seed tender, 2-compartment, electric scale, 180 degree swing conveyor, hyd. controls, Honda GX 340 electric start motor, roll tarp, 11R22.5 tires on steel rims, S/N318564

**2015 PJ gooseneck trailer**, 40'x102", tandem axle, spring susp., beavertail, Monster flip-over ramps, 10,000 lb. axles, wood deck, 235/80R16 dual tires, low miles

**2008 Big Tex 25DU-18 gooseneck dump trailer**, 18'x96", 48" sides, tandem axle, spring susp., combo gate, roll tarp, self-contained 12v hyd. system, 235/85R16 dual tires

**2013 PJ T6222 tilt bed trailer**, 23'x82", tandem axle, torsion susp., electric brakes, wood deck, 7,000 lb. axles, 2-5/16" ball, 235/80R16 tires on 8-bolt hubs

**2012 Unverferth tri-axle trailer**, torsion axles, electric brakes, 2-5/16" ball, 235/80R16 tires

## CHEMICAL & FERTILIZER EQUIPMENT

**2013 Fast 8224 liquid side dresser**, 36x22", John Deere rate controller, 2,400 gal. tank, 5-section rear fold, 3" fill, depth wheels on coulters, 380/90R54 duals, "2 seasons of use", S/N822446450513

**Riverbend Industries 4-wheel chemical caddy**, 1,500 gal. tank, hyd. pump, 3-section control, flotation tires

**Norwesco 2610**, 2,500 gal. horizontal poly tank, bottom surp, mounted on steel skid frame, never used

**17,000 gal. vertical water tank**, steel, 2" valve

**(2) 3,000 gal. poly fertilizer tanks**, 3" valve

**(2) 1,500 gal. poly tanks**, 2" valve

**Honda 3" transfer pump**, GX200 motor

## GRAIN HANDLING EQUIPMENT

**2012 Brandt 1390 low pro swing hopper auger**, 90"x13", 540 PTO, hyd. lift, S/N97687

**2005 Westfield J208-51 loadout auger**, 51'x8", 10 hp., 1 phase electric motor, on transport, S/N167165

**2001 Westfield J208-31 loadout auger**, 31'x8", Honda 13 hp., electric start motor, on transport, S/N138196

**2014 Batco 1545FL field loader belt conveyor**, Kohler 26 hp. EFI motor, hyd. winch, HD hyd. self-propelled mover kit, ext. hopper, S/N160211

**2004 Brandt 5000EX grain vac**, 9" hyd. fold auger, clean up kit w/brush hose & galvanized flex pipes, 1000 PTO, S/N74186

## GRAIN HANDLING EQUIPMENT

**2014 Kwik Kleen 772 7-tube grain cleaner**, 7-1/2 hp., 1 phase, screenings auger, S/N1861

**1994 Farm Fans CMS1500H continuous flow stackable grain dryer**, (6) burners, 3 phase, propane, Moisture Matic automatic dryer control, disassembled, 5,282 hrs., S/N0-23001

**Rotary drum seed treater**

## HAY EQUIPMENT

**2009 Krone 890 Big Pack medium square baler**, 3'x3' bales, in-cab bale length adjust, knottor blower, hyd. fold roller chute, windrow depressor, last bale eject, auto lube, Krone display, hyd. bale tension, Harvestec preservative applicator, tandem axle, 500/50-17 tires, approx. 33,000 bales, S/NKBP8774128

**Tonutti TCR8 PRO pull-type 8-wheel V rake**, hyd. fold, center kicker wheel, "used on approx. 300 acres of straw", S/N677256

## LOADER & LOADER ATTACHMENTS

**2013 Case-IH L795 quick tach loader**, 98" quick tach bucket, aux. hyd., mounts for 235 Magnum, S/NYDWLV5001

**Haugen snow bucket**, 102", Euro mounts for Case-IH loader

**Haugen bale spear**, Euro mounts for Case-IH loader

## WHEEL LOADER & ATTACHMENTS

**1972 John Deere 544A wheel loader**, cab w/heat, 90" bucket, hyd. quick tach, aux. hyd., 20.5-25 tires, shows 5,919 hrs., S/N544AA178278

**NSW wheel loader forks**, 5' carriage, 5'x6" forks

**Anbo root grapple**, 9', quick tach for John Deere 544A wheel loader or John Deere 840 loader

**Shopbuilt rock/root bucket**, 52", hyd. grapple, quick tach mounts for John Deere 544A wheel loader

**Bucket**, 110", 4-1/2 cu. yd., quick tach for John Deere 544A wheel loader

**Shopbuilt header mover**, quick tach for John Deere 544A wheel loader

## FORKLIFT & MANLIFTS

**2007 Toyota 7FGU25 forklift**, 5,000 lb. cap., propane, 3-stage mast, side shift, 42" forks, pneumatic tires, 2,462 hrs., S/N76854

**1999 Snorkel 126 Pro boom lift**, diesel, 4WD, 126' max reach, extendable axles, 445/65R22.5 tires, 5,945 hrs., S/N990242

**2011 JLG 2646ES scissor lift**, 26' max platform height, 24v, extendable platform, solid rubber tires, 32 hrs., "Like new", S/N0200201703

## MINI EXCAVATOR, SKID STEER & ATTACHMENTS

**2005 Deere 50D mini excavator**, CAH, radio, hyd. offset boom, aux hyd., hyd. thumb, manual coupler, 30" bucket w/frost teeth, 16" rubber tracks, 78" backfill blade, 2,521 hrs., S/NFF050DX244089

**1996 John Deere 4475 skid steer**, ROPS, diesel, manual quick tach, 70" bucket, 10-16.5 tires, 1,966 hrs., S/NM04475X025027

**Bobcat pallet forks**, 42" forks, universal skid steer mounts

**Jenkins rock grapple**, 84", 3" tine spacing, bolt-on end plates, universal skid steer mounts

**2004 Brandt 5000EX grain vac**, 9" hyd. fold auger, clean up kit w/brush hose & galvanized flex pipes, 1000 PTO, S/N74186

**2004 Brandt 5000EX grain vac**, 9" hyd. fold auger, clean up kit w/brush hose & galvanized flex pipes, 1000 PTO, S/N74186

**2004 Brandt 5000EX grain vac**, 9" hyd. fold auger, clean up kit w/brush hose & galvanized flex pipes, 1000 PTO, S/N74186

**2004 Brandt 5000EX grain vac**, 9" hyd. fold auger, clean up kit w/brush hose & galvanized flex pipes, 1000 PTO, S/N74186

**2004 Brandt 5000EX grain vac**, 9" hyd. fold auger, clean up kit w/brush hose & galvanized flex pipes, 1000 PTO, S/N74186

**2004 Brandt 5000EX grain vac**, 9" hyd. fold auger, clean up kit w/brush hose & galvanized flex pipes, 1000 PTO, S/N74186

**2004 Brandt 5000EX grain vac**, 9" hyd. fold auger, clean up kit w/brush hose & galvanized flex pipes, 1000 PTO, S/N74186

# SteffesGroup.com

Steffes Group, Inc., 2000 Main Avenue East, West Fargo, ND 58078 | 701.237.9173

Brad Olstad ND319, Scott Steffes ND81, Bob Steffes ND82, Max Steffes ND999, Ashley Huhn ND843, Eric Gabrielson ND890, Randy Kath ND894, Scott Gillespie ND1070, Shelly Weinzell ND963



TERMS: All items sold as is where is. Payment of cash or check must be made sale day before removal of items. Statements made auction take precedence over all advertising. \$35 documentation fee applies to all titled vehicles. Titles will be mailed. Canadian buyers need a bank letter of credit to facilitate border transfer.





# Farm Retirement AUCTION

MONDAY, NOVEMBER 12 | 10AM

81-02

SteffesGroup.com

AUCTION LOCATED: 565 164th Ave SE, Hillsboro, ND

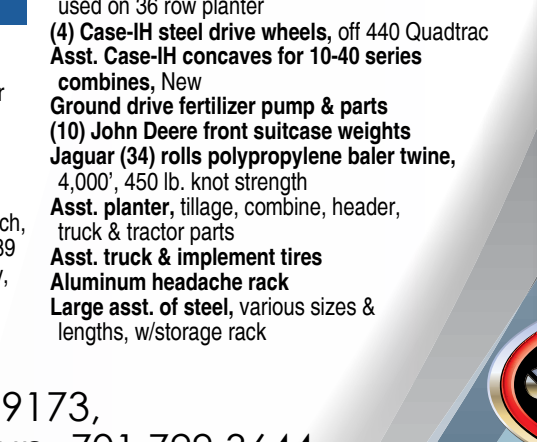
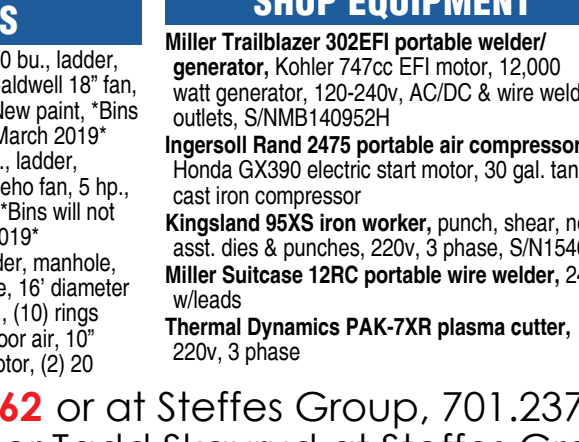
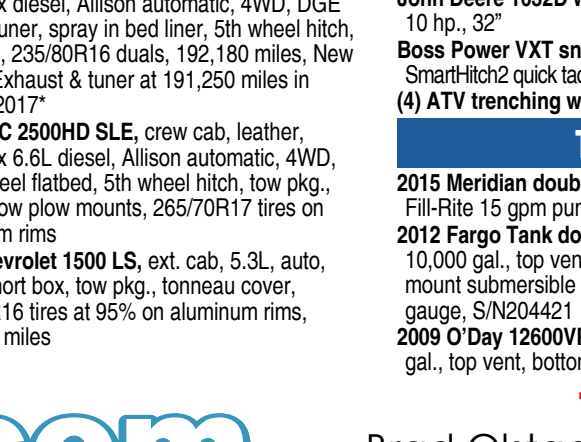
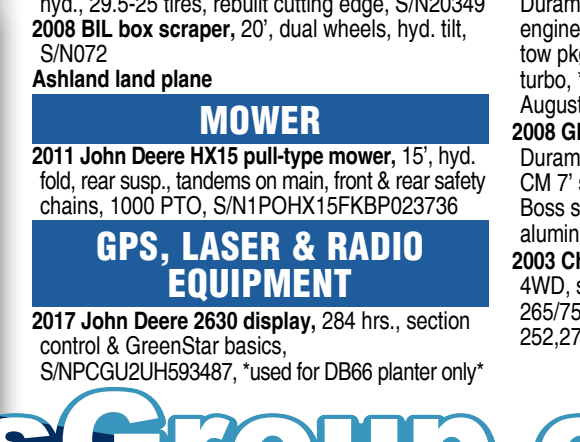
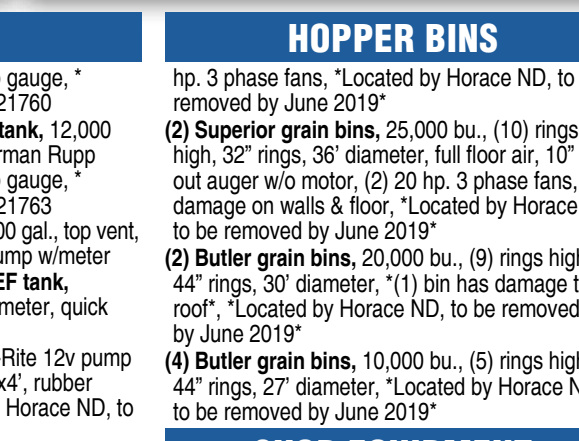
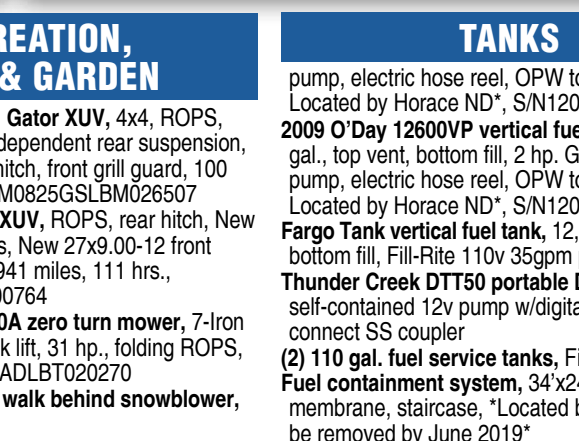
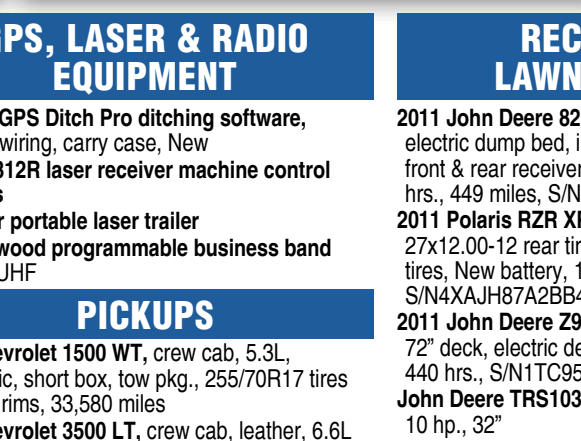
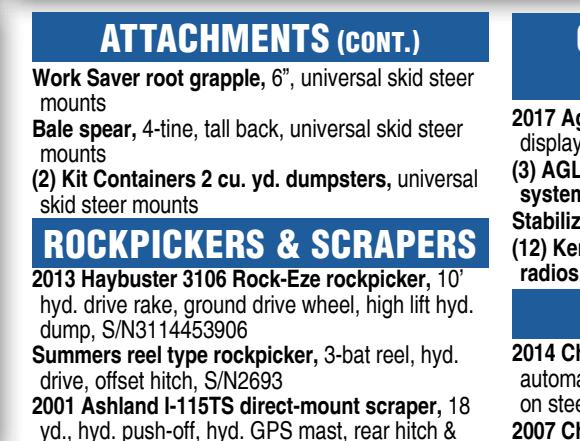


Monday, November 12 | 10AM



## Farm Retirement AUCTION

Steffes Group, Inc.  
2000 Main Avenue East  
West Fargo, ND 58078-2210



### ATTACHMENTS (CONT.)

Work Saver root grapple, 6", universal skid steer mounts  
Bale spear, 4-tine, tall back, universal skid steer mounts  
(2) Kit Containers 2 cu. yd. dumpsters, universal skid steer mounts

### ROCKPICKERS & SCRAPERS

2013 Haybuster 3106 Rock-Eze rockpicker, 10' hyd. drive rake, ground drive wheel, high lift hyd. dump, S/N3114453906  
Summers reel type rockpicker, 3-bat reel, hyd. drive, offset hitch, S/N2693  
2001 Ashland I-115TS direct-mount scraper, 18 yd., hyd. push-off, hyd. GPS mast, rear hitch & hyd., 29.5-25 tires, rebuilt cutting edge, S/N20349  
2008 BIL box scraper, 20', dual wheels, hyd. tilt, S/N072  
Ashland land plane

### MOWER

2011 John Deere HX15 pull-type mower, 15', hyd. fold, rear susp., tandems on main, front & rear safety chains, 1000 PTO, S/N1POHX15FKBP023736

### GPS, LASER & RADIO EQUIPMENT

2017 John Deere 2630 display, 284 hrs., section control & GreenStar basics, S/NPCGU2UH593487, \*used for DB66 planter only\*

### GPS, LASER & RADIO EQUIPMENT

2017 Ag GPS Ditch Pro ditching software, display, wiring, carry case, New  
(3) AGL 312R laser receiver machine control systems  
Stabilizer portable laser trailer  
(12) Kenwood programmable business band radios, UHF

### PICKUPS

2014 Chevrolet 1500 WT, crew cab, 5.3L, automatic, short box, tow pkg., 255/70R17 tires on steel rims, 33,580 miles  
2007 Chevrolet 3500 LT, crew cab, leather, 6.6L Duramax diesel, Allison automatic, 4WD, DGE engine tuner, spray in bed liner, 5th wheel hitch, tow pkg., 235/80R16 duals, 192,180 miles, New turbo, "Exhaust & tuner at 191,250 miles in August 2017"  
2008 GMC 2500HD SLE, crew cab, leather, Duramax 6.6L diesel, Allison automatic, 4WD, CM 7" steel flatbed, 5th wheel hitch, tow pkg., Boss snow plow mounts, 265/70R17 tires on aluminum rims  
2003 Chevrolet 1500 LS, ext. cab, 5.3L, auto, 4WD, short box, tow pkg., tonneau cover, 265/75R16 tires at 95% on aluminum rims, 252,279 miles

### RECREATION, LAWN & GARDEN

2011 John Deere 825i Gator XUV, 4x4, ROPS, electric dump bed, independent rear suspension, front & rear receiver hitch, front grill guard, 100 hrs., 449 miles, S/N1M0825GSLMB026507  
2011 Polaris RZR XP XUV, ROPS, rear hitch, New 27x12.00-12 rear tires, New 27x9.00-12 front tires, New battery, 1,941 miles, 111 hrs., S/N4XAJH87A2BB400764  
2011 John Deere Z950A zero turn mower, 7-Iron 72" deck, electric deck lift, 31 hp., folding ROPS, 440 hrs., S/N11TC950ADLBT020270  
John Deere TRS1032 walk behind snowblower, 10 hp., 32"  
John Deere 1032D walk behind snowblower, 10 hp., 32"  
Boss Power VXT snow plow, 9'-2", power V, SmartHitch2 quick tech, "No vehicle bracket or wiring"  
(4) ATV trenching wheels

### TANKS

2015 Meridian double wall fuel tank, 2,000 gal., Fill-Rite 15 gpm pump, S/N6720130753836  
2012 Fargo Tank double wall vertical fuel tank, 10,000 gal., top vent, top fill, Fill-Rite 110v top mount submersible pump w/meter, OPW top gauge, S/N204421  
2009 O'Day 12600VP vertical fuel tank, 12,000 gal., top vent, bottom fill, 2 hp. Gorman Rupp

### TANKS

pump, electric hose reel, OPW top gauge, \* Located by Horace ND, S/N120821760  
2009 O'Day 12600VP vertical fuel tank, 12,000 gal., top vent, bottom fill, 2 hp. Gorman Rupp pump, electric hose reel, OPW top gauge, \* Located by Horace ND, S/N120821763  
Fargo Tank vertical fuel tank, 12,000 gal., top vent, bottom fill, Fill-Rite 110v 35gpm pump w/meter tires, New battery, 1,941 miles, 111 hrs., S/N4XAJH87A2BB400764  
Thunder Creek DTT50 portable DEF tank, self-contained 12v pump w/digital meter, quick connect SS coupler  
(2) 110 gal. fuel service tanks, Fill-Rite 12v pump Fuel containment system, 34"x24"x4", rubber membrane, staircase, \* Located by Horace ND, to be removed by June 2019\*

### HOPPER BINS

(3) 2005 Lorrlich hopper bins, 5,000 bu., ladder, manhole, Rocket Tube aeration, Caldwell 18" fan, 7-1/2 hp., 1 phase, 16" diameter, New paint, "Bins will not be able to be moved until March 2019"  
2005 Lorrlich hopper bin, 5,000 bu., ladder, manhole, Rocket Tube aeration, Keho fan, 5 hp., 1 phase, 16" diameter, New paint, "Bins will not be able to be moved until March 2019"  
Micada hopper bin, 3,700 bu., ladder, manhole, Caldwell 5 hp. fan, single ring base, 16" diameter  
(2) Superior grain bins, 25,000 bu., (10) rings high, 32" rings, 36" diameter, full floor air, 10" take out auger w/5 hp. 3-phase motor, (2) 20

### HOPPER BINS

hp. 3 phase fans, \*Located by Horace ND, to be removed by June 2019"  
(2) Superior grain bins, 25,000 bu., (10) rings high, 32" rings, 36" diameter, full floor air, 10" take out auger w/o motor, (2) 20 hp. 3 phase fans, damage on walls & floor, \*Located by Horace ND, to be removed by June 2019"  
(2) Butler grain bins, 20,000 bu., (9) rings high, 44" rings, 30" diameter, \* (1) bin has damage to roof, \* Located by Horace ND, to be removed by June 2019"  
(4) Butler grain bins, 10,000 bu., (5) rings high, 44" rings, 27" diameter, \* Located by Horace ND, to be removed by June 2019"

### SHOP EQUIPMENT

Miller Trailblazer 302EFI portable welder/generator, Kohler 747cc EFI motor, 12,000 watt generator, 120-240v, AC/DC & wire welder outlets, S/NMB140952H  
Ingersoll Rand 2475 portable air compressor, Honda GX390 electric start motor, 30 gal. tank, cast iron compressor  
Kingsland 95XS iron worker, punch, shear, notch, asst. dies & punches, 220v, 3 phase, S/N154689  
Miller Suitcase 12RC portable wire welder, 24v, w/leads  
Thermal Dynamics PAK-7XR plasma cutter, 220v, 3 phase

### SHOP EQUIPMENT

Weatherhead Super 1 hyd. hose crimper, asst. dies, ends, couplers, hose, mounted on HD rolling cart  
WF Wells & Sons 14" metal band saw, on stand  
Shop press, hyd., approx. 50 ton, 5' wide, adj. shelf, 3 phase  
Norco clutch jack, 300 lb. cap.  
Norco transmission jack, 3,000 lb. cap.  
Snap-On tool box  
Asst. power tools, cordless tools, hand tools, tool boxes, shop equipment, etc.

### PARTS

John Deere hyd. drive motors & sensors for DB planter  
John Deere CompuTrak 450 planter monitor, used on 36 row planter  
(4) Case-IH steel drive wheels, off 440 Quadtrac Asst. Case-IH concaves for 10-40 series combines, New  
Ground drive fertilizer pump & parts  
(10) John Deere front suitcase weights  
Jaguar (34) rolls polypropylene baler twine, 4,000', 450 lb. knot strength  
Asst. planter, tillage, combine, header, truck & tractor parts  
Asst. truck & implement tires  
Aluminum headache rack  
Large asst. of steel, various sizes & lengths, w/storage rack

# SteffesGroup.com

Steffes Group, Inc., 2000 Main Avenue East, West Fargo, ND 58078 | 701.237.9173

Tom McInnes Jr., / 701.430.0162 or at Steffes Group, 701.237.9173,  
Brad Olstad at Steffes Group, 701.238.0240 or Tadd Skaurud at Steffes Group, 701.729.3644



TERMS: All items sold as is where is. Payment of cash or check must be made sale day before removal of items. Statements made auction take precedence over all advertising. \$35 documentation fee applies to all titled vehicles. Titles will be mailed. Canadian buyers need a bank letter of credit to facilitate border transfer.